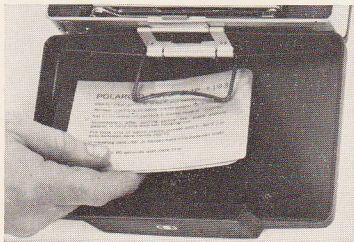
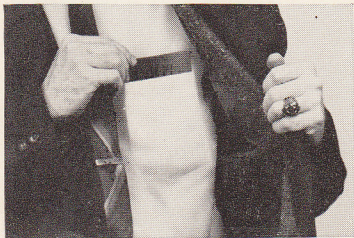


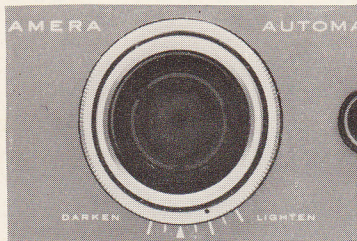
# HOW TO USE THE POLAROID COLD-CLIP #193



When the temperature is 65° F. (18° C.) or below, use the Cold-Clip to develop all color pictures made in Color Pack cameras. If you are unsure of the temperature, use the Cold-Clip anyway. It may improve the color of your pictures and it can do no harm even if the temperature is somewhat above 65° F. (18° C.).



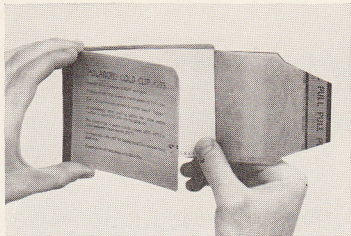
Before you start taking pictures, put the Cold-Clip in a warm inside pocket for five minutes, so it will be warmed by body heat.



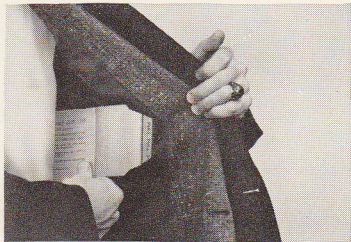
Whenever it's cold enough to use the Cold-Clip it's necessary to give additional exposure.

With automatic cameras, set the L/D control two marks farther toward Lighten than it would be for the same picture in warm weather.

With non-automatic cameras, set the exposure controls one EV number or one f-number lower than you would for the same picture in warm weather.



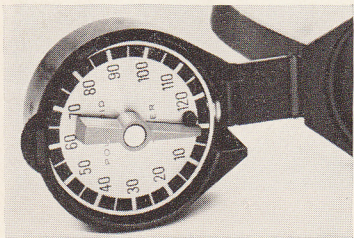
As soon as you have pulled the yellow tab out of the camera to start development, place the complete picture assembly inside the Cold-Clip with the tab end hanging out. This must be done within 10 seconds after pulling the tab.



When the temperature is above 40° F. (5° C.) put the Cold-Clip in an inside pocket next to body heat. At near freezing temperatures (40° F. — 5° C. — or below) hold the Cold-Clip between your body and your arm, both to preheat the Cold-Clip and to develop the picture.

continued





Develop the picture for 60 seconds inside the Cold-Clip next to body heat, then remove the picture assembly and separate the print from the negative.

**NEVER USE THE COLD-CLIP WITH  
BLACK AND WHITE FILMS.**

When the Cold-Clip is not in use, store it in the camera cover as shown on page 1.